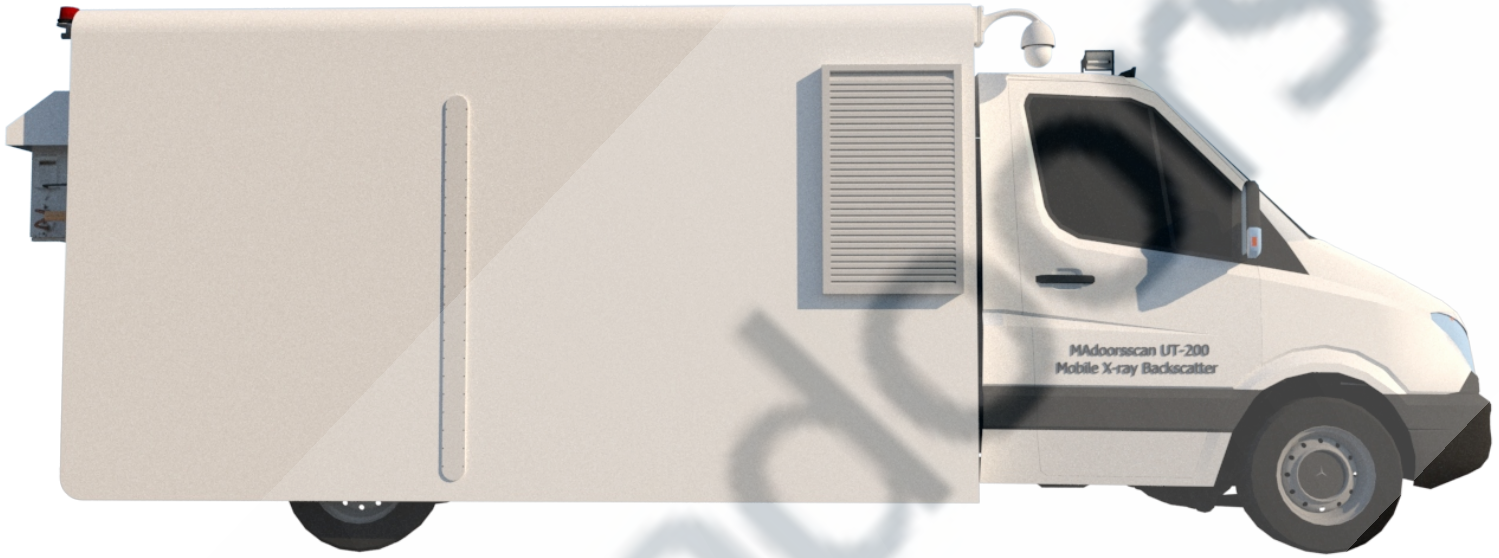




**X-ray Container-Cargo-Truck-Trailer Imaging System**



## X-ray Container-Cargo-Truck-Trailer Imaging System



### UT-200 X-RAY BACKSCATTER APPLICATIONS

- Protection of military forces
- Security checkpoints
- Urban surveillance
- Customs checkpoints
- Government and high-risk facilities
- Customs cargo screening
- Event and VIP security

## X-ray Container-Cargo-Truck-Trailer Imaging System

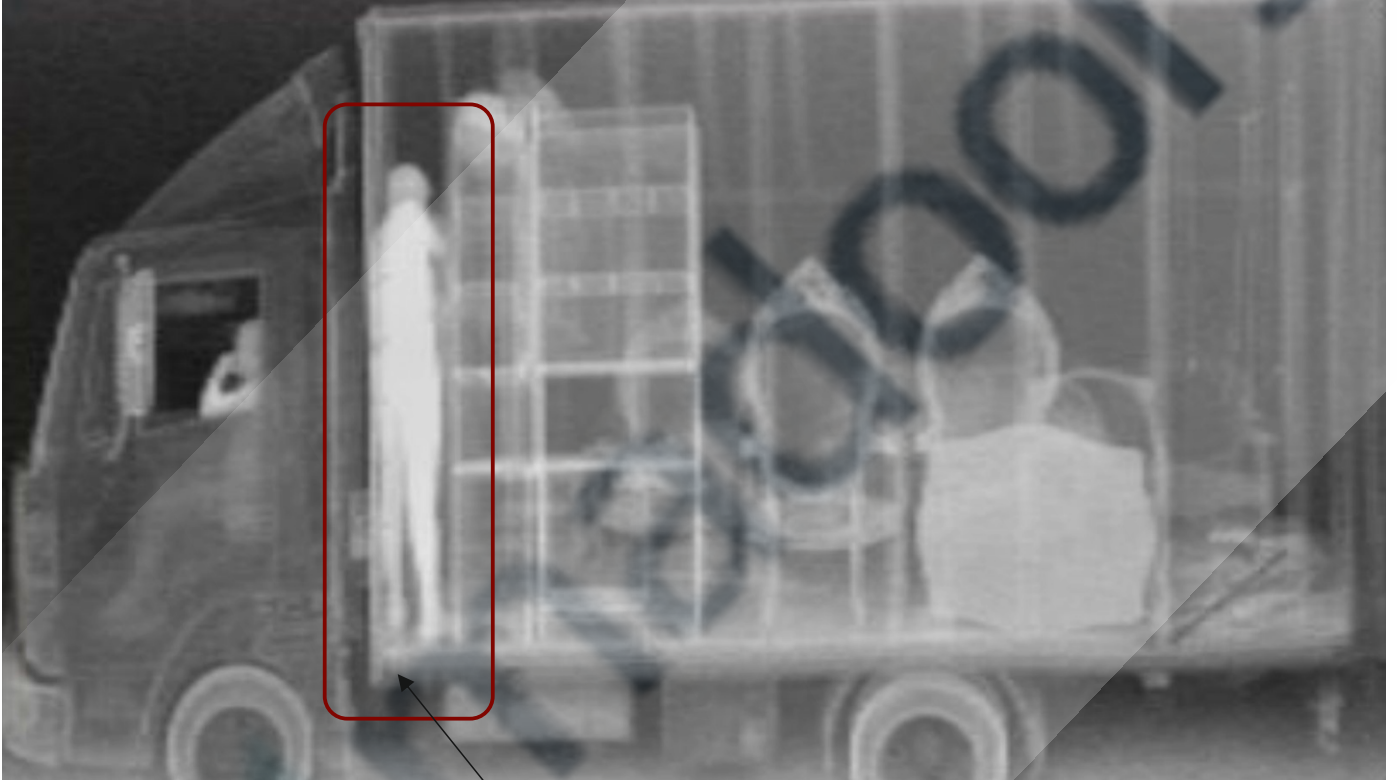
### MADOORSSCAN UT-200 BACKSCATTER VAN

Madoorsscan UT-200 X-ray Backscatter Scanning Van is a low-cost, mobile X-ray screening system built into a commercially available delivery van. With one-sided, backscatter-only imaging and the option for Radioactive Threat Detection (RTD), security officials can use UT-200 for screening vehicles, sea containers, and other cargo for terrorist threats, trade fraud, and contraband simply by driving past the subjects.

The MAdoorsscan UT-200 is take images of the contents of a container or vehicle, providing manifest verification information and high lighting organic materials. The UT-200 can image 10 lbs (4.5 kg) of organic material, such as C4 or cocaine, placed immediately behind 0.24 inches (8 mm.) of steel when scanned from a distance of 2 mt. at a scan speed of 0.3 mph (0.5 kph). The UT-200's optional Radioactive Threat Detection feature is capable of identifying low levels of radioactivity from both gamma rays and neutrons. The UT-200 is ideal for screening vehicles for large quantities of drugs, car/truck bombs, and stowaways.



## X-ray Container-Cargo-Truck-Trailer Imaging System



illegal passenger

X-ray Backscatter technology provides photo-like images that reveal organic threats and contraband, including explosives, cigarettes, and drugs. Optional Radioactive Threat Detection (RTD) can inspect for neutrons and gamma rays typically associated with fissile (nuclearbomb) or dirty bomb (e.g. Cesium-137) materials.

## X-ray Container-Cargo-Truck-Trailer Imaging System

### RAPID AND MOBILE X-RAY SCREENING

MAdoorsscan UT-200 Backscatter X-ray reveals drugs and explosives The UT-200's mobile platform allows for immediate deployment in response to security threats and its unmatched scan speed facilitates rapid screening

The Madoorsscan UT-200 is a X-RAY Backscatter-only system that does not require a detector on the far side of the scanned object, making it highly maneuverable and flexible. It can be operated covertly, since it maintains the outward appearance of an ordinary van. With the operator controls mounted on a console in the center of the UT-200's cab, the system can be operated by one or two people simply by swiveling the console towards the driver's or passenger's side.



## X-ray Container-Cargo-Truck-Trailer Imaging System

Stationary and Remote Operation The UT-200 can also be operated in stationary mode by parking the system and producing X-ray images of vehicles as they drive past. Screening can also be accomplished remotely while the system is parked. Remote operation allows scanning to be done safely, even in dangerous environments. In these modes, UT-200 operators may elect to scan the occupants of the subject vehicle. For this application, MAdoors offers a Personnel Scanning option that may better enable the customer to meet any applicable country-specific regulatory requirements.



## X-ray Container-Cargo-Truck-Trailer Imaging System

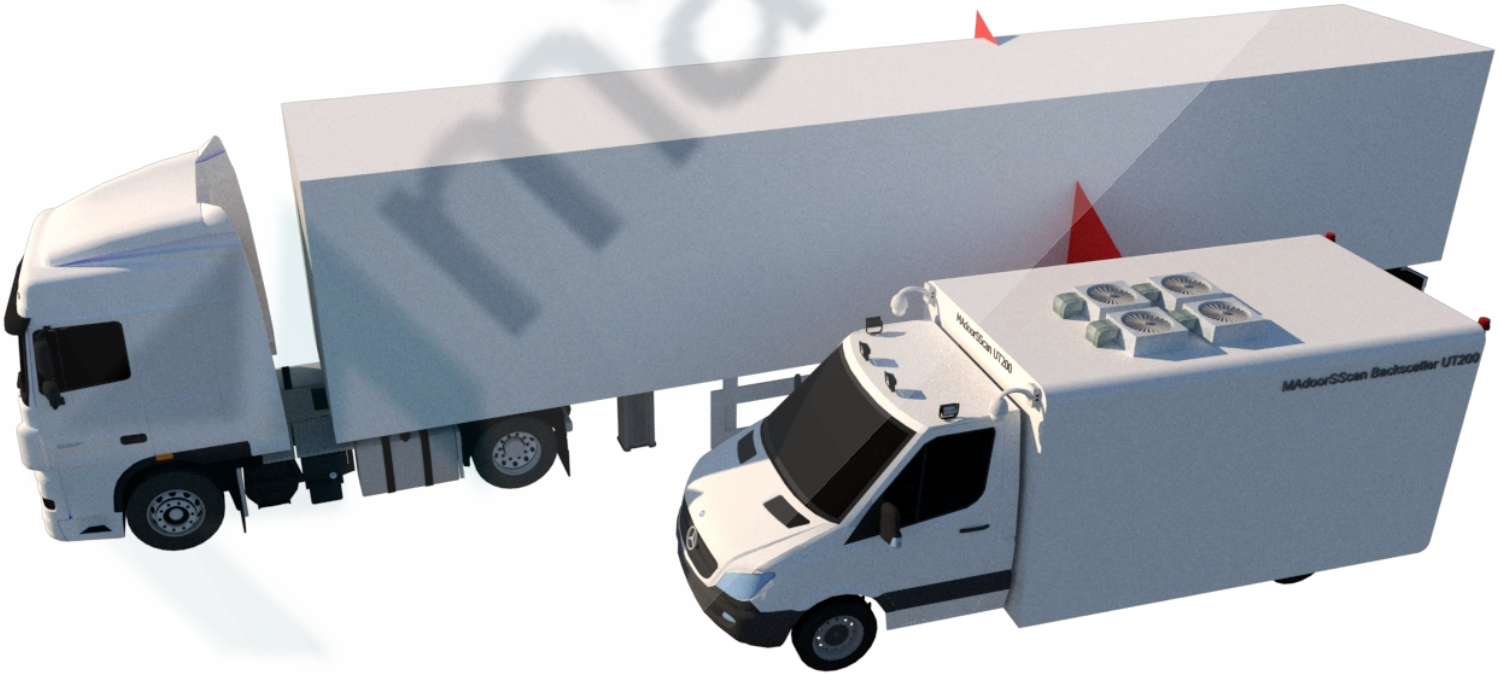
### X-RAY BACKSCATTER OPERATING FEATURES

**X-Ray Source:** 225 keV X-ray tube

**Resolution:** (7 mm), normal to the side of the UT-200 at a distance of (2m) at a scan speed of 1 mph (1.5 kph)

**Scan Speeds (Operator Selectable):** 0.3, 1.0, 3.0, and 6.0 mph (0.5,1.5, 5.0 and 10.0 kph)

**Scan Field of View:** 3.6 m in height at 1.5 m from the side of the UT-200 ; or 4.3 m. in height at 2.3 m. to scan a hi-cube container in one pass



## X-ray Container-Cargo-Truck-Trailer Imaging System

**Operator's Console:** 17" LCD high-intensity monitor

**Operating System:** Windows 10 64-Bit

**Madoors Inspection Software and Features :** MAdoors Inspection is the Windows-based application software used to convert X-ray data into images. MAdoors x-ray Inspection contains a suite of tools for manipulating and enhancing images, and it is used for image storage and retrieval.

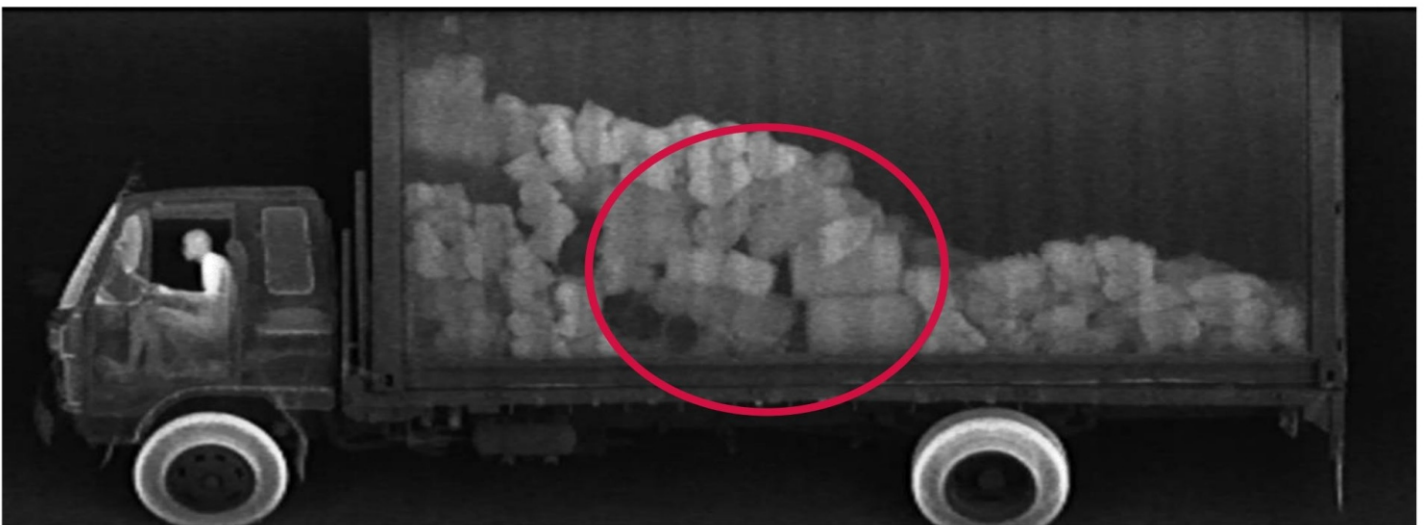
**Mark and Annotate:** Attaches pointers and comment fields to images

**Database Function:** Provides ability to create records relating to specific scans

**Quick Save:** Allows operator to save any part of a multi-target image as well as the entire image

**Full Save:** Automatically saves the current image to hard disk when its accompanying database record is saved

**Archive:** Manually saves stored image files on a CD/DVD-RW disk, and creates a reference to the disk in the database





## X-ray Container-Cargo-Truck-Trailer Imaging System

### Image Analysis Tools

**Density Expand:** Controls and continuously adjusts the contrast of the displayed image, thus enhancing the differences in objects

**Auto Enhance:** Automatically optimizes contrast throughout the image

**Sharpen:** Accentuates the edges of objects in the image

**Reverse Video:** Displays the normal, “positive” image or the reverse black and-white “negative” image

**High Contrast:** Intensifies subtle differences in contrast

**Color Palettes:** Adds the ability to evaluate images in greater depth using up to 11 color palettes

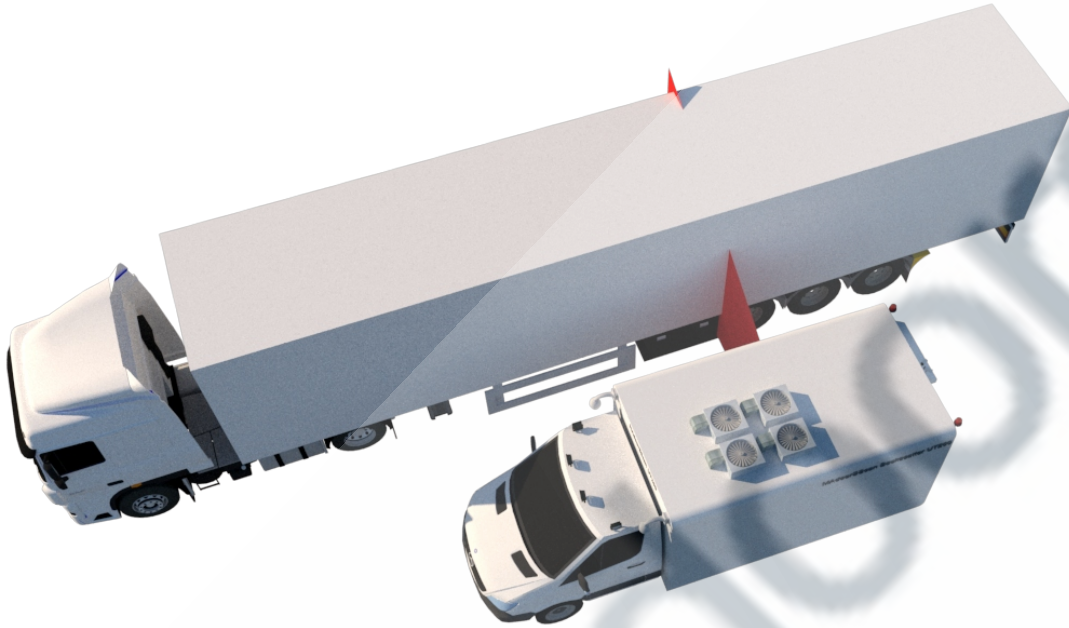
**Historical Compare:** Side-by-side comparison of a current image to a saved image

**Zoom:** 2x, 3x, 4x magnification with the ability to roam continuously through full field of view

**Pan and Scroll:** Ability to examine any part of the image at preset display magnifications



## X-ray Container-Cargo-Truck-Trailer Imaging System



### HEALTH AND SAFETY

**Dose to Cargo:** Less than 0.01 mR (0.1  $\mu$ Sv) per scan, at an average speed of 3 mph (5 kph) at 5' (1.5 m) distance

**Environmental/Operator Dose:** Less than 0.1 mR (1  $\mu$ Sv) in any one hour

CE Certified

### ENVIRONMENT

**Ambient Operating:** 32°F to 108°F (0°C to 42°C)

**Storage:** -4°F to 140°F (-20°C to 60°C)

**Operable in:** Rain, snow, and high winds

**Hot Weather Package (option):** Guarantees operation up to 122°F (50°C)

**Cold Weather Package (option):** Guarantees operation down to -20°F (-29°C)

**Harsh Environment (option):** Includes hot and cold weather packages

